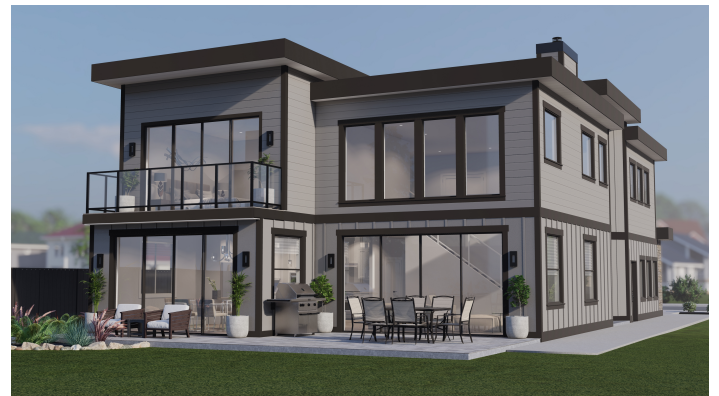




3560 Bonnie Drive - Lot 17 Beban Woods Nanaimo, BC

Spectacular oceanfront & mountain views at Stephen Point in desirable Hammond Bay area. Just a short walk to Piper's Lagoon & Neck Point Park and close to all amenities. Two storey home with sprawling oversize windows and full glass patio double doors maximizing on the amazing views. Open concept loft style living allows for a grand gourmet kitchen with hidden pantry, double-floor stone fireplace & hardwood flooring. Upstairs has bonus/recreational room. A must see!

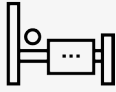


BALLARD[®]

FINE HOMES



3,207
Square Feet



3
Bedrooms



3
Bathrooms



Main Floor



Upper Floor